

# CITY OF SHELDON

April 2011

## PLEASE NOTE!

The snow melt is just around the corner. The City would like to remind everyone that it is illegal to have a sump pump draining into the sanitary sewer. Thank you for your cooperation.

## Summer Recreation Brochure is Out

The Sheldon Parks and Recreation Departments registration is now open! Residents can access the service at the city's Web Site – [www.sheldoniowa.com](http://www.sheldoniowa.com) – under the city services - Parks and Recreation page.

After creating an account, people will be able to register and make online payment for recreation programs and also make requests to reserve facilities through the internet system. People will still be able to walk-in and register for programs if they desire. If you choose to register online, you will only be able to pay with a Debit or Credit Card. If the system asks for an additional security code, and you do not have one, you will need to contact your credit card provider. This is not from the City of Sheldon, or the Active Network System, but a security measure of your credit card provider. When walking in to register, you will be able to pay with Debit, Credit Card, Check and/or Cash.

The 2011 Summer Brochure became available March 16<sup>th</sup>, 2011 and was distributed through the schools in Sheldon, as well as various businesses throughout Sheldon. You can also pick one up at the City Offices or the SCDC offices. The brochure will give you an in-depth view of the online process, as well as all of the upcoming programs for 2011. On line and walk in registration for the summer programs began on March 21, 2011.

Registration for Outdoor Soccer has begun and will be available until April 8th. If you do not wish to register online, you can walk-in and register at the City Offices with a \$2 registration fee per child with a maximum of \$6 per family. No registrations will be taken without full payment. Walk-in registrations will be taken Monday through Friday from 7:30 a.m. until 4:00 p.m.

If you have any questions about the online registration process or about any of the upcoming summer activities, please call Andy Lueth at the Recreation Department - 324-2769.

## CHILDREN'S EASTER EGG HUNT

Saturday, April 23, 2011

Sheldon City Park

10:00 a.m.

Ages 2-12

15,000 Eggs will be hidden.

Registration forms may be filled out ahead of time for an opportunity to win a bike. Registration forms will NOT be available that day. Age categories: 2-4, 5-7, 8-9, 10-12. A girl's bike and a boy's bike will be drawn from each age category. Entry forms can be picked up at the SCDC Office, or go to [www.sheldoniowa.com](http://www.sheldoniowa.com).



## GOLDEN EASTER EGG HUNT

- Friday, April 15 through April 21 or until the egg is found.
- The "Grand Prize" will be \$1,000 in Sheldon Dollars (**prize amount is subject to change**). The amount will decrease \$100 each day...prize not to be less than \$500.
- Clues will be given out every day beginning on Friday, April 15. No clues given on Saturday or Sunday.
- If the egg has not been found by Friday, April 22, clues will be given on KIWA.

Rules: Egg is hidden in City limits. No need to destroy anything to locate the egg. No need to search on residential property. Bring the egg to the SCDC Office in the Community Services Center at 416 9th Street to claim your prize. KIWA will announce the past clues. Look for the daily clue in the sponsor businesses. Winners of the Golden Easter Egg Hunt from the past five years are not eligible to participate.

April 2011

City of Sheldon  
416 9th Street  
PO Box 276  
Sheldon, IA 51201

**We're on the web**  
[www.sheldoniowa.com](http://www.sheldoniowa.com)

### MAYOR'S PRAYER BREAKFAST

Reserve 6:15 a.m. to 7:30 a.m. on May 5, 2011 to attend the Mayor's Prayer Breakfast at the Sheldon Community Services Center. Tickets may be purchased at the City Offices, Dave's Appliance or by calling Loretta Vander Linden at 324-2273. This event is sponsored by the Sheldon Area Ministerial Association and the National Day of Prayer Task Force.

## SPRING CLEAN UP FLAGS ON SALE NOW!!

Now is a great opportunity to take advantage of this clean up. After this takes place, the City will be going out and checking for nuisances, so please do your part to keep Sheldon looking nice.

- Due to Easter and Mother's Day, there is a week in between the dates set.

West of Washington Avenue is May 2nd and 3rd

East of Washington Avenue is May 16th and 17th

If you would like to participate, a \$15.00 fee must be paid at the City Clerk's Office, 416 9th Street by April 29 at 3:00 p.m. if you live on the West side of Washington Avenue, and May 13 at 3:00 p.m. if you live on the East side of Washington Avenue. Upon payment, you will receive a flag that must be prominently displayed at your residence with your items to be picked up. No payments will be accepted at the time of pick up.

1. ITEMS MUST BE PLACED CURB SIDE.
2. METAL AND APPLIANCES SHOULD NOT BE PLACED IN THE TRASH PILE.
3. APPLIANCES WITH COMPRESSORS will be picked up if the freon has been removed by a certified technician, and a tag has been placed by the technician indicating this has been done. ALL ITEMS WITH CAPACITORS must have them removed before we will pick them up. THIS WILL BE ENFORCED.
4. TREE BRANCHES OR BRUSH WILL BE PICKED UP SEPARATELY.
5. RESIDENTIAL HOMES ONLY.
6. PLEASE, ONE HOUSEHOLD PER FLAG.

\*\*\*\*\*ITEMS THAT WILL NOT BE PICKED UP\*\*\*\*\*

HAZARDOUS, TOXIC MATERIALS, OR LIQUIDS of any kind; TIRES OR BATTERIES; ROOFING OR LARGE PILES OF DEMOLITION MATERIAL; GARBAGE; GRASS TRIMMINGS OR LEAVES; CONCRETE OR BRICK  
No containers will be left. Please do not use good garbage cans or recycling bins.

For further information, call 324-4651.

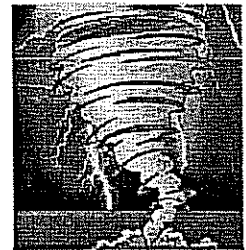
## COMMUNITY CLEAN UP DAY

As part of the ongoing effort to clean-up Sheldon and showcase our community, the Sheldon Marketing Committee would like to encourage and invite ALL Sheldon residents, service groups, clubs and organizations to participate in Sheldon's 6<sup>th</sup> ANNUAL Community Clean-Up Day – Saturday, May 14<sup>th</sup>!

To make this event a success and really make a "clean sweep" of Sheldon – WE NEED YOUR HELP! Please plan to participate in Community Clean-Up day on Saturday, May 14 from 9 a.m. to NOON. You may choose to participate at either City Park or Hills Park. If you, your business, or your club/organization would be willing to adopt a specific project, please contact the SCDC office at 324-2813 as soon as possible! A complete listing of all Adopt-A-Projects can be obtained at the SCDC office.

## OUTDOOR WARNING SYSTEM

The Sheldon EMA has announced a 3 minute city activated test of Sheldon's outdoor warning system April thru September. This test is in addition to the county activated test of Sheldon's outdoor warning system on the 1st Wednesday of each month. City residents should be advised that beginning in April, Sheldon's outdoor warning system will be tested the 1st & 3rd Wednesdays of each month at 12:30 p.m.



## MUSEUM SUMMER HOURS

Beginning April 4, 2011, the Museum will be open Mondays from 9-11 a.m. and 6-8 p.m. and on Tuesday, Thursday & Saturdays from 1-3 p.m. To schedule an appointment, call 348-2405 or 324-3235. Thank you.